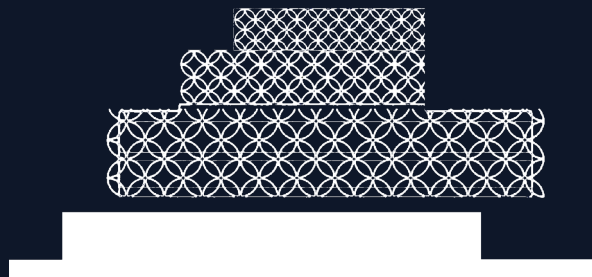




# PROCURE PARTNERSHIPS

## FRAMEWORK



# Executive Summary

The Procure Partnerships Framework was established to support public sector bodies to procure contractor partners. The framework is divided into regional lots supporting the framework values of local delivery with national governance. The pilot for the Procure Partnerships Framework was the North West region (Procure North West Framework) which was launched in July 2018. After its rousing success, the decision was made to roll out the regional framework model nationally.

The Procure Partnerships Framework pushes the boundaries of how procurement can support public sector bodies to deliver their strategic targets. The framework has been built to be flexible giving clients choice with single stage or two stage procurement options and up to 8 forms of call off contract. There is also no fee for public sector bodies across the UK to access the framework and clients are always in full control of each projects procurement process via their individual 'Project Page' hosted upon the 'iProcure ePortal'

As well as helping to facilitate projects that will help shape our growing towns and cities, we felt it was important to give something back and help protect the future of the industry in the region through enhanced upskilling and training. Like other frameworks, our partners will be required to deliver projects in line with the Social Value Act but we want to go one step further and as a framework directly invest in construction skills training across each region.

Through our experience and detailed analysis of procurement options across the UK, there are multiple factors that result in frameworks not working in the most efficient or beneficial ways for both clients and contractors. We have addressed these when structuring the Procure Partnerships Framework ensuring that the framework is flexible but robust, and that our clients can prove demonstrable value for money when procuring their projects in partnership with us.

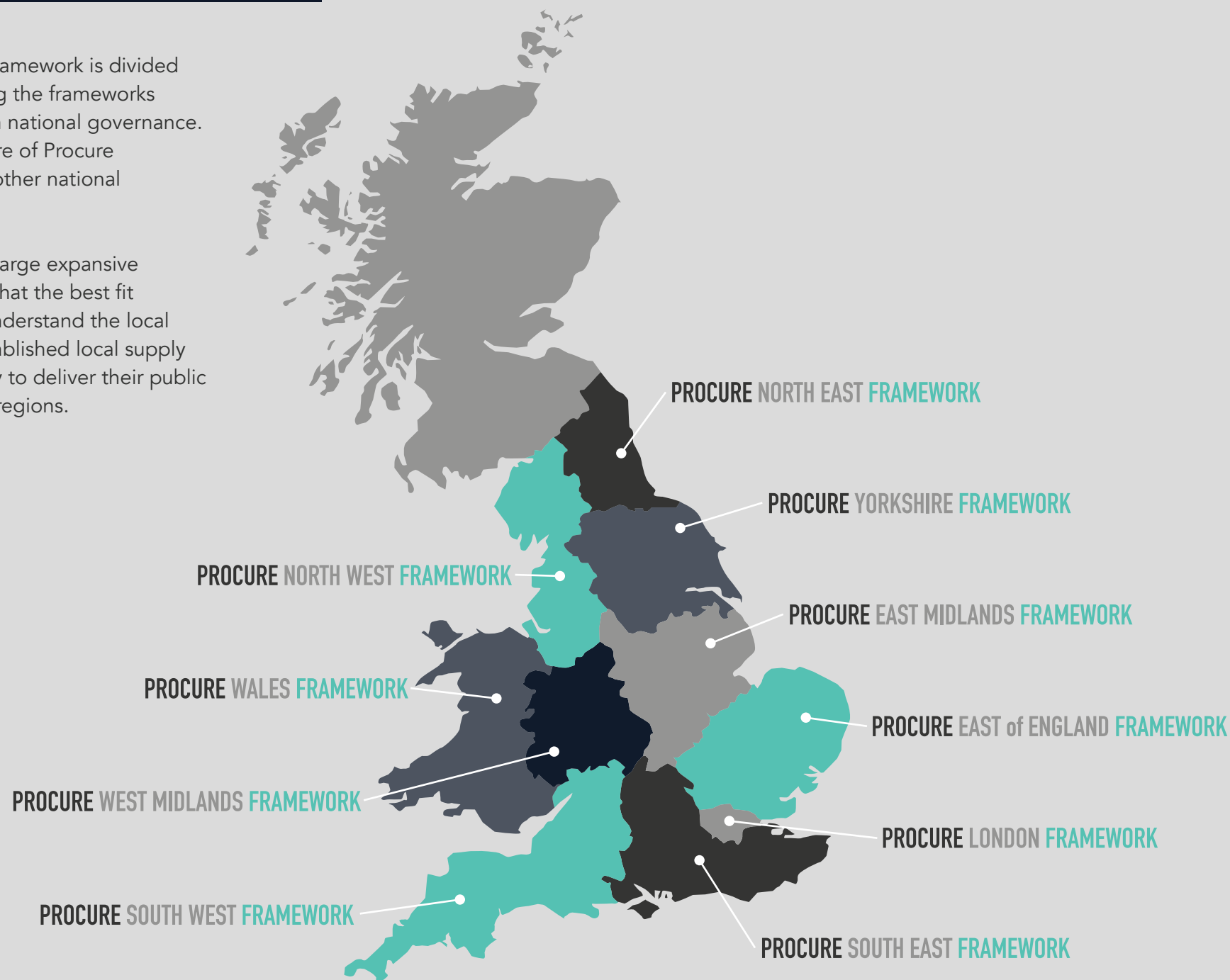


Robbie Blackhurst  
Framework Director | [Procure Partnerships Framework](#)

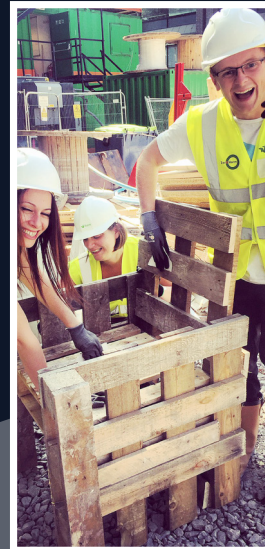
## Regional Coverage

The Procure Partnerships Framework is divided into regional lots supporting the frameworks values of local delivery, with national governance. The regional lotting structure of Procure Partnerships is different to other national frameworks.

Regional lots do not cover large expansive geographies. This ensures that the best fit regional contractors who understand the local demographic and have established local supply chains have the opportunity to deliver their public sector projects within their regions.



## Social Value



### Supporting Local People and their Local Communities

Social Value is at the heart of everything that we do, and we measure ourselves and our partners against the sustainability of our Social Value activities. Social Value activities will never be tokenistic and must leave a lasting legacy with either individuals or upon communities. This is strictly governed at a framework level.

### 12% of each projects value reinvested in social value activities

At Procure Partnerships Framework we invest back into the local communities that we operate within supporting clients with their CSR activities. Every project procured through the Framework will have its own Social Value Plan ensuring that 12% of the projects construction value is directly reinvested into social value activities. Each projects agreed social value targets are monitored at a framework level throughout the projects lifecycle.

## Framework Benefits



### Free to Access

There are no subscription fees paid by any public sector organisation across England or Wales to use the framework.



### OJEU PCR15 Compliant

The framework has followed a robust OJEU procurement process and is fully compliant with Public Contract Regulations 2015.



### Design & Build or Build Only

Public sector organisations can select from design and build or build only delivery models for their projects.



### Flexible form of Contracts

There are 8 forms of call off contract that public sector organisations can choose from covering both JCT and NEC.



### Transparent Fee Structure

There are no hidden costs to use the framework and it is clear to public sector organisations what is included within each contractors OH&P.



### Fixed Contractor Overhead & Profit

Contractor partners overhead and profit percentages are competitive and fixed for the duration of the framework.



### Single Stage or Two Stage Tenders

Public sector organisations can select to run fully priced single stage tenders, two stage mini competitions, or direct award projects.



### Free Project Delivery Support

The Procure Partnerships management team will not disappear after procurement and support client teams throughout delivery.



### Demonstrable Value for Money

The framework offers public sector organisations demonstrable value for money with robust commercial pricing proformas.



### Quick Contractor Appointments

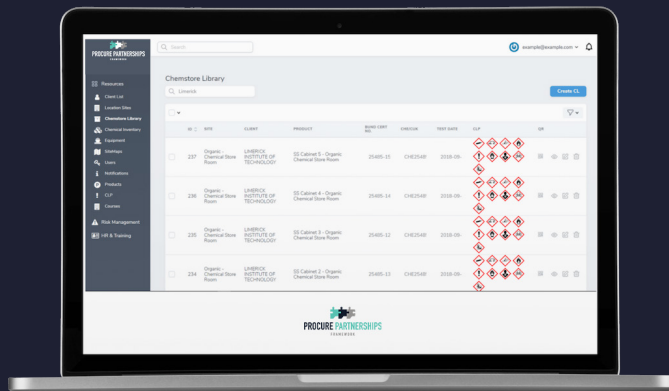
Public sector organisations can negate lengthy open OJEU processes by utilising the framework saving both time and money.

# Project Delivery Support

The iProcure Portal has been developed by the Procure Partnerships Framework for free and exclusively for framework client users. The portal can be used to run initial expressions of interest allowing clients to soft market test interest in their projects, to run a tender process, and to also monitor project performance throughout the project lifecycle with detailed monthly reporting.

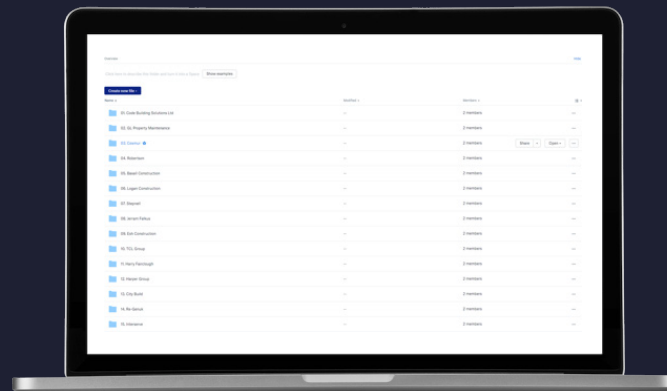
We will not go away once you have your contractor on board and continue to support the client team throughout the pre-construction, construction, handover and final account phases of their projects. We conduct monthly reports on all projects which allows the framework to be proactive and not reactive to any project performance issues offering clients direct hands on delivery support.

## Market Testing



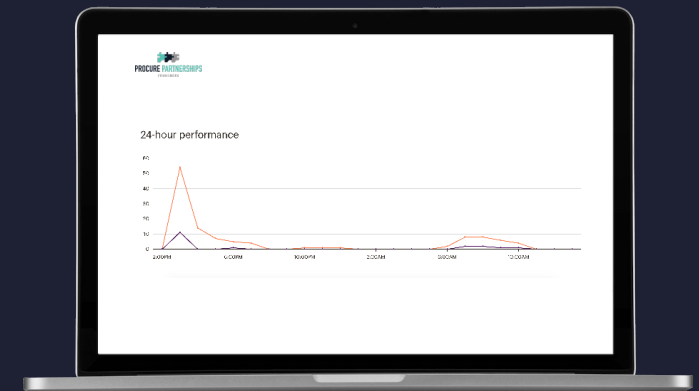
Quick and effective soft market testing to gauge initial tender interest in your project with contractors making informed bid / no bid decisions.

## Run a Tender



Run a compliant tender process sharing tender documentation, answering tender queries, and receiving tender returns all on the one platform.

## Monthly Reporting



Receive monthly dashboard reports covering real time performance in relation to time, cost, safety, and progress against social value targets.



## Framework Users

The Procure Partnerships Framework contract notice has been structured in a manner to allow any of the public sector bodies listed below to use the frameworks. In order to comply with Public Contract Regulations 2015, we have physically named every UK Public Sector organisation within the original Procure Partnerships OJEU notice.



**Schools and  
Academies**



**College and  
Universities**



**Government  
Departments**



**NHS  
Bodies**



**Local  
Authorities**



**Health and  
Social Care**



**Libraries and  
Museums**



**Housing  
Associations**



**Emergency  
Services**



**Registered  
Charities**



**Ministry of  
Defence**



**Leisure  
Providers**

## Call-off Methods

The Procure Partnerships Framework has been structured to provide Public Sector users with three OJEU and PCR15 call-off methods



### Two Stage Mini Competition

---

Contractors are invited to submit a bid for your project based upon a series of quality questions (set by you) and a commercial submission which commonly includes a pre-construction fee, onsite prelim, and fixed OH&P. You then select one contractor at the end of mini competition stage to develop the remaining design in partnership.



### Single Stage Tender

---

Contractors are invited to fully price your project providing competitive quotations at the end of the tender period. Commonly the design for your project is required to be at RIBA Stage 4 for a Single Stage Tender. The framework has been set up to permit variance in the balance of quality / cost assessment percentages.



### Direct Award

---

A framework contractor is directly selected for a project without re-opening competition. Contractors can work with you under a PCSA to develop any remaining design or request for your project to be fully priced. If you are interested in direct award, then please get in touch and we can let you know how the process works.



# Performance Management



## SAFETY MANAGEMENT

Supply Chain  
Partners  
framework wide  
AIR is captured  
on a monthly  
basis



## FAIR PAYMENT

Subcontractor  
partners are  
paid by the Main  
Contractor within  
30 days



## COST CONSTRUCTION

Cost  
predictability is  
monitored during  
construction  
(excl. client  
changes)



## COST DESIGN

Cost  
predictability is  
monitored during  
pre-construction  
(excl. client  
changes)



## TIME CONSTRUCTION

Time  
predictability is  
monitored during  
construction (excl.  
client changes)



## TIME DESIGN

Time  
predictability is  
monitored during  
pre-construction  
(excl. client  
changes)



## SATISFACTION SERVICE

Clients score  
Supply Chain  
Partners in  
relation to service  
satisfaction



## SATISFACTION PRODUCT

Clients score  
Supply  
Chain Partners  
in relation  
to product  
satisfaction



## DEFECT MANAGEMENT

Supply Chain  
partners ability to  
deliver projects  
with zero defects  
is monitored



## SUSTAINABILITY

12% of the total  
project value  
reinvested in  
Social Value  
activities

## Tender Process / Time Scales

The Procure Partnerships Framework has been structured to provide Public Sector users with three OJEU and PCR15 call-off methods.



### Two Stage Mini Competition

Complete PIF

Issue Documents

Tenders Returned

Evaluate, Interview

Award

— — — 4 to 6 Weeks — — —



### Single Stage Competitive Tender

Complete PIF

Formal EOI (8 to 4)

Issue Documents

Tenders Returned

Evaluate, Interview

Award

1 Week

— — — 8 to 10 Weeks — — —



### Direct Award

Complete PIF

Review Compliance

Issue Approval

Award

— — — — — 1 Week — — — — —

## Procure West Midlands Framework

£50k to £1m

The Procure West Midlands Contractor Framework is OJEU compliant and divided into four value banded lots. The below contractors have been selected to deliver projects between £50k and £1m across the region. Public Sector clients can choose from 3 different call off options (two stage mini competition, single stage competitive tender, or direct award).

In addition, clients can let projects on a Design and Build or Build Only basis and can choose from up to 8 different forms of delivery contract, covering the core variances of JCT and NEC.



The Procure Partnerships Framework also has a £50k to £1m value band which is accessible to public sector bodies in other regions across England and Wales.



### Get in touch:

Susan Reznik - Key Account Manager

e. [susan@procurepartnerships.co.uk](mailto:susan@procurepartnerships.co.uk)

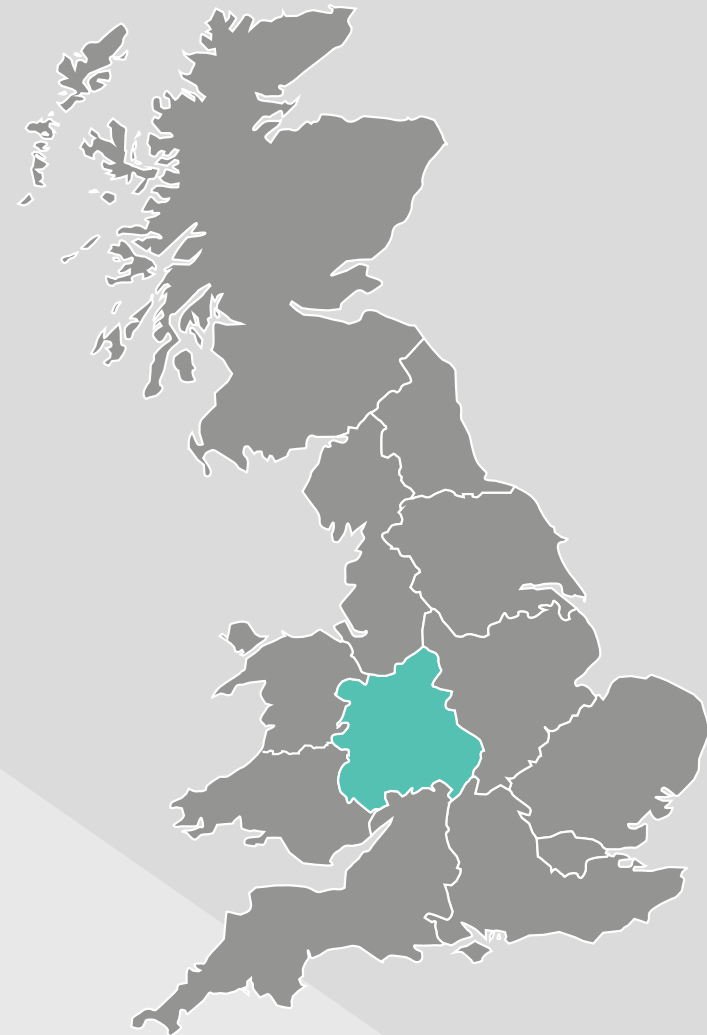
m. 0739 947 5944

## Procure West Midlands Framework

£1m to £4m

The Procure West Midlands Contractor Framework is OJEU compliant and divided into four value banded lots. The below contractors have been selected to deliver projects between £1m and £4m across the region. Public Sector clients can choose from 3 different call off options (two stage mini competition, single stage competitive tender, or direct award).

In addition, clients can let projects on a Design and Build or Build Only basis and can choose from up to 8 different forms of delivery contract, covering the core variances of JCT and NEC.



The Procure Partnerships Framework also has a £1m to £4m value band which is accessible to public sector bodies in other regions across England and Wales.



### Get in touch:

Susan Reznik - Key Account Manager

e. [susan@procurepartnerships.co.uk](mailto:susan@procurepartnerships.co.uk)

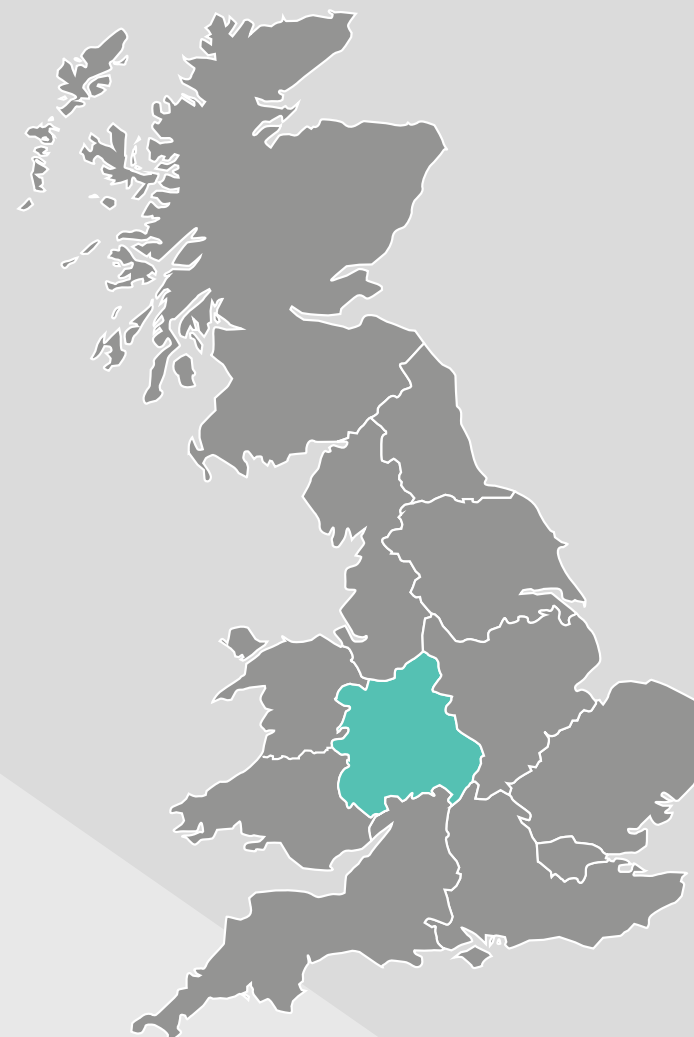
m. 0739 947 5944

## Procure West Midlands Framework

£4m to £12m

The Procure West Midlands Contractor Framework is OJEU compliant and divided into four value banded lots. The below contractors have been selected to deliver projects between £4m and £12m across the region. Public Sector clients can choose from 3 different call off options (two stage mini competition, single stage competitive tender, or direct award).

In addition, clients can let projects on a Design and Build or Build Only basis and can choose from up to 8 different forms of delivery contract, covering the core variances of JCT and NEC.



The Procure Partnerships Framework also has a £4m to £12m value band which is accessible to public sector bodies in other regions across England and Wales.



### Get in touch:

Susan Reznik - Key Account Manager

e. [susan@procurepartnerships.co.uk](mailto:susan@procurepartnerships.co.uk)

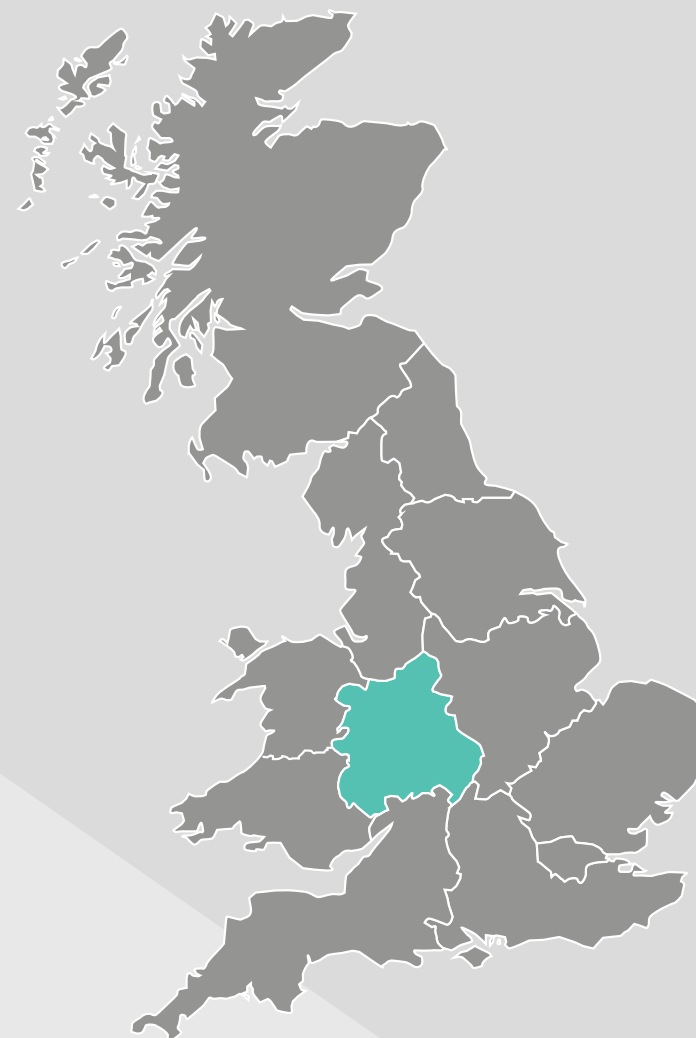
m. 0739 947 5944

## Procure West Midlands Framework

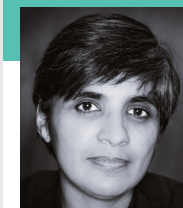
£12m+

The Procure West Midlands Contractor Framework is OJEU compliant and divided into four value banded lots. The below contractors have been selected to deliver projects above £12m across the region. Public Sector clients can choose from 3 different call off options (two stage mini competition, single stage competitive tender, or direct award).

In addition, clients can let projects on a Design and Build or Build Only basis and can choose from up to 8 different forms of delivery contract, covering the core variances of JCT and NEC.



The Procure Partnerships Framework also has an above £12m value band which is accessible to public sector bodies in other regions across England and Wales.



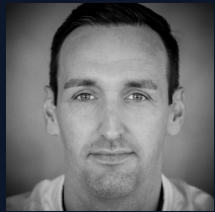
### Get in touch:

Susan Reznik - Key Account Manager

e. [susan@procurepartnerships.co.uk](mailto:susan@procurepartnerships.co.uk)

m. 0739 947 5944

## Get in Touch



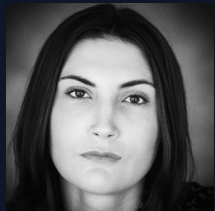
**Robbie Blackhurst** | Framework Director

e. [robbie@procurepartnerships.co.uk](mailto:robbie@procurepartnerships.co.uk)  
t. 0151 318 1149



**Louise Matthews** | Framework Manager

e. [louise@procurepartnerships.co.uk](mailto:louise@procurepartnerships.co.uk)  
m. 0778 550 5205  
t. 0151 318 1149



**Faye Dolan** | Key Account Manager (North)

e. [faye@procurepartnerships.co.uk](mailto:faye@procurepartnerships.co.uk)  
m. 0739 968 4037  
t. 0151 318 1149



**John Boyce** | Key Account Manager (East)

e. [john@procurepartnerships.co.uk](mailto:john@procurepartnerships.co.uk)  
m. 0753 595 9563  
t. 0151 318 1149



**Phil Osborne** | Key Account Manager (South)

e. [phil@procurepartnerships.co.uk](mailto:phil@procurepartnerships.co.uk)  
m. 0787 206 0805  
t. 0151 318 1149



**Susan Reznik** | Key Account Manager (West)

e. [susan@procurepartnerships.co.uk](mailto:susan@procurepartnerships.co.uk)  
m. 0739 947 5944  
t. 0151 318 1149



**Christine Kinsella** | Framework Coordinator

e. [christine@procurepartnerships.co.uk](mailto:christine@procurepartnerships.co.uk)  
t. 0151 318 1149



**Conor Neild-Crabb** | Marketing Manager

e. [conor@procurepartnerships.co.uk](mailto:conor@procurepartnerships.co.uk)  
t. 0151 318 1148





# PROCURE PARTNERSHIPS

FRAMEWORK

First Floor  
Edward Pavilion  
Royal Albert Dock  
Liverpool Waterfront  
L3 4AF

t. 0151 318 1149

w. [procurepartnerships.co.uk](http://procurepartnerships.co.uk)

e. [info@procurepartnerships.co.uk](mailto:info@procurepartnerships.co.uk)

Twitter // @ProcurePF

LinkedIn // Procure-Partnerships